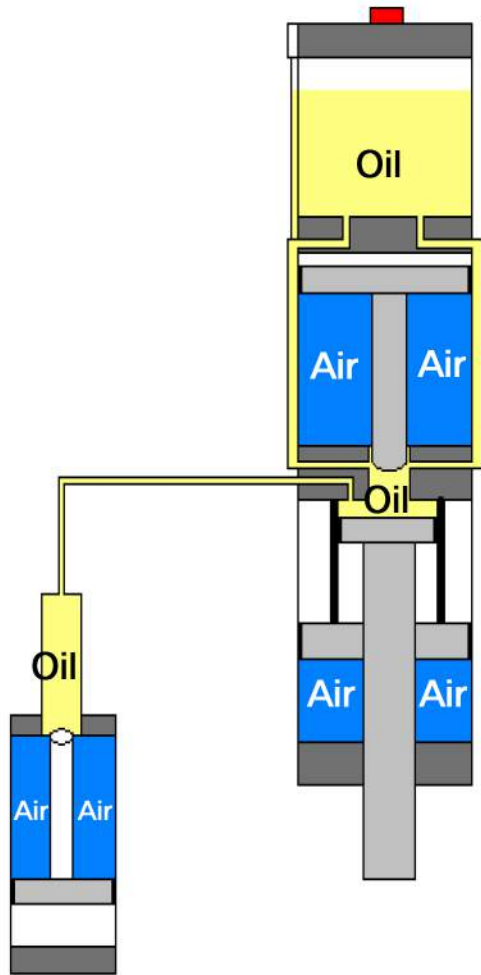
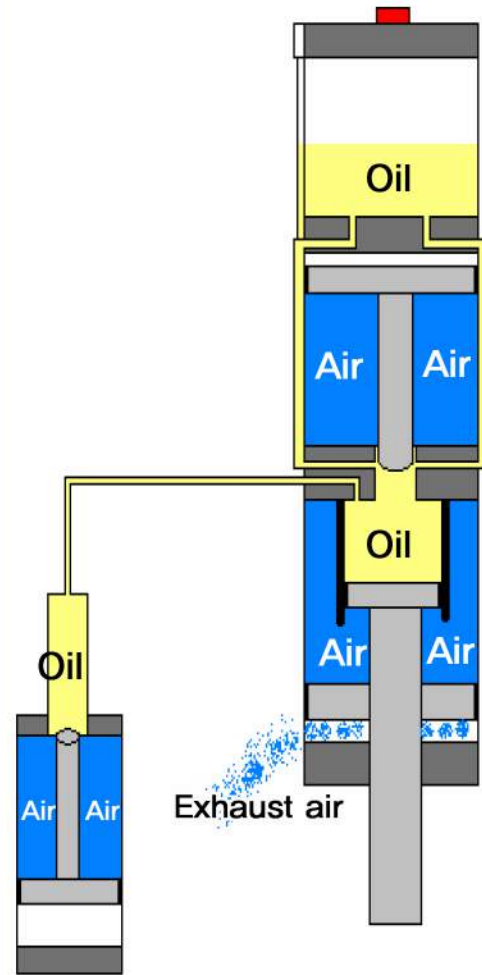


# DPA - 2차 가압 동작 설명

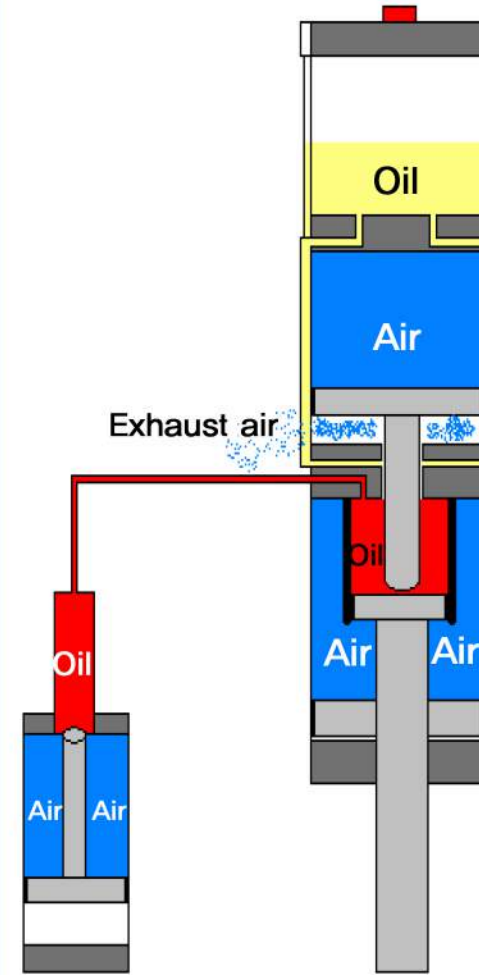
■ Pressure Air   
 ■ Exhaust air   
 ■ Oil   
 ■ Intensify



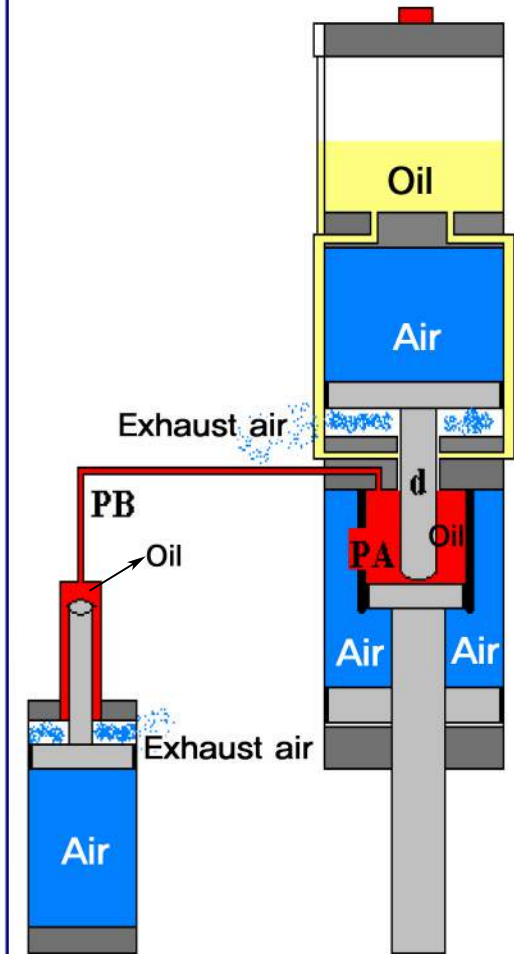
[Rest unit]



[Low pressure rapid]  
 [Approach stroke]



[Working stroke]



[1/If PB=PA, PB cannot fill in PA]  
 [2/If PB>PA, d will be force up]