

## 宏霸机电是一家主营直线传动器的国际性公司

自2004年成立以来,宏霸机电经历了翻天覆地的变化。我们一直追求完美的、创新发展,正是这一理念使得宏霸机电在二十一世纪发展为优秀直线电动传动器的制造商,并且很快发现,这一新发明的潜力超出了任何人的想象。传动器为办公室、医院、舒适家具、农场和工业等众多领域中的使用者带来了极大的人体工程学效能,大大降低了使用者的劳动强度。宏霸机电已经成为直线传动器系统设计和制造的世界一流企业。

Wuxi Hongba Mechanical Electrical Equipment Co., Ltd is a international company which specialized in linear systems.

It launched since 2004 and experienced enormous changes. We' ve been seeking for perfect, innovative development ideas and make Hongba became the excellent linear system manufacturer in the nineties of the 21th and knew abroad. The potential of this new invention beyond everyone' s imagine. The transmission have bring powerful efficient on human engineering in office, hospital, casual furniture, farm and other industry fields, largely reduced the labor intensity. Hongba has been became the world-classed linear system enterprise both in design and manufacture.

## 我们的成功归功于我们的客户

宏霸机电为客户提供创新、优质和出众的服务。宏霸机电是众所周知的拥有多种创新型解决方案和先进技术的制造商,已经凭借最前沿尖端的产品给我们和我们的客户带来了战略性优势,在市场上稳居领先地位。

Our success is attribute to our clients.

We provide customers with innovation, high quality and very excellent service, and well knew by a variety of innovation solutions and advanced technical technology manufacturer, and the top products have make strategic advantages to our customers and be the eading position in the market.

在宏霸机电,我们十分忠诚于推动我们业务成长的顾客和环境,这是我们必须始终秉承的:价值,世界级生产运作,知识,创新,安全,合作伙伴,坚固。

为了这7个理念,宏霸机电获得了以下标准认证:

- ISO 9001质量管理体系
- CE产品认证

In HongBa, we loyal to our clients and conditions which drive us grow up, this is the point where we must insist on: Value, World class manufacturing operations, knowledge, Innovation, security, cooperation and strong.

In order to this 7 ideas, we achieved 7 certificates as below:

- ISO9001 Quality management systems
- CE Certificat

无锡市宏霸机电设备有限公司真诚期待与广大客户长期合作发展双赢!

We are looking forward to establishing long and win-win business relationship with all the customers home and abroad.



传动方案专家  
Transmission Solutions Expert



地址 / ADD: 无锡市南长区梁东路118-3号 / NO.118-3 Liangdong Road, Nanchang District, Wuxi China  
电话 / TEL: (86) 0510-81011388 传真 / FAX: (86) 0510-81018780 邮编 / P.C: 214000  
外贸电话 / TEL: (86) 0510-85436730 外贸邮箱 / E-mail: info@wxhongba.com  
公司邮箱 / E-mail: wxhb@wxhongba.com 网址 / Http://www.wxhongba.com



宏霸机电  
Hongba Electromechanical

无锡市宏霸机电设备有限公司

Wuxi Hongba Mechanical Electrical Equipment Co., Ltd

More please login>>>[www.wxhongba.com](http://www.wxhongba.com)



## HB-DJ818

宏霸提供为各类自动化应用而设计的电动推杆解决方案，我们专注于为您设计可靠而精确的传动方案，即使在最极端的条件下也能满足您的需求和指标。

随着社会的进步，自动化应用方案在各个领域得到长足发展，我们致力于为此进程提供最佳传动方案。

HB provides for various automation application designed electric putter solution, we focus on the design for your reliable and precise transmission solutions, it can meet your needs and targets successfully even under extremely bad conditions.

Along with social progress, automatic solutions get great progress in various fields, we are committed to provide the best transmission solutions for this process.



### 特性 >>>

推力：7.5-15KN

速度：2.5mm/s

行程：500mm, 750mm, 1000mm (可选)

占空比：-40°C 到+70°C 时10%

电压：直流24V

### Features >>>

Push force: 7.5-15KN

Speed: 2.5mm/s

Stroke: 500mm, 750mm, 1000mm (Optional)

Duty cycle: -40°C to +70°C 10%

Input voltage: 24VDC

### 应用范围 >>>

太阳能应用

其它种类的工业应用

### Range of application >>>

For Solar application

For other industry application

HB-DJ818电动推杆支持电位计，霍尔等信号反馈，此推杆是为存在更大推力和保持力需要的太阳能应用而设计的。

HB-DJ818 linear actuator support potentiometer, Hall and signal feedback, it's designed for the solar application of powerful push and lasting force.

### 选件 >>>

内置行程开关

带A/B信号的霍尔效应传感器

不同长度的可互换电缆

### Option >>>

Build in Limit switch

Hall effect sensors with A/B signal

Interchangeable length of cables

### 产品特性>>>

大推力

重型铝壳

自锁能力强

寿命长达20年

设计为室外使用

### Features >>>

Heavy load

Strong self-locking

20 years service life

Design for outdoor using

## HB-DJ805

HB-DJ805采用高强度金属材料、坚固耐用，可代替传统工业推杆，应用于各类极端条件下的传动需求。

HB-DJ805 use high strength metal and durable materials, can take the place of traditional industry linear actuator, and applies to the transmissions requirements of all kinds of extremely harsh conditions.



### 特性 >>>

推力：10000N

速度：最快40mm/s

行程：100-1000mm(可选)

占空比：10%

电压：直流12、24V

端点止动：滑动离合或内置限位开关

### Features >>>

Max load: 10000 N.

Max Speed: 40mm/s

Stroke: 100-1000mm (Optional)

Duty cycle: 10%

Input voltage: 12/24VDC

built-in clutch and built-in limit switch

### 应用范围 >>>

农业应用

移动“非公路”应用

地面清扫机及洗涤剂

各种工业设备

太阳能跟踪器

### Range of application >>>

Agricultural application

Mobile off-highway application

The ground cleaning machine and scrubber

Other industry facilities

Solar tracker

### 选件 >>>

电位计

霍尔效应传感器

### Option >>>

Potentiometer

HALL effect sensor

### 产品特性 >>>

结实金属构造

适于极恶劣条件

通过盐雾及化学测试

耐高压去污剂

设计为室外使用

### Features >>>

Solid metal structure

Suitable for extremely harsh conditions

Passed salt spray and chemical test

Resistance to high pressure detergents

For outdoor design



## HB-DJ808

HB-DJ808是一种传统的工业推杆，坚固、耐用，广泛应用于各类重型传动需求。

HB-DJ808 is a traditional solid, lasting linear actuator, widely used in various heavy load transmission needs.



### 特性 >>>

推力：推力可达7000N，拉力可达6000N  
速度：最快38mm/s  
行程：100mm，200mm，300mm，400mm(可选)  
占空比：25%  
电压：直流12/24/36/48V  
端点止动：内置限位开关

### Features >>>

Load: push 7000N, pull 6000N  
Max Speed: 38mm/s  
Stroke: 100mm, 200mm, 300mm, 400mm (Optional)  
Duty cycle: 25%  
Input voltage: 12/24/36/48VDC  
build in limit switch

### 应用范围 >>>

农业应用  
移动“非公路”应用  
地面清扫机及洗涤剂  
各种工业设备  
太阳能跟踪器

### Range of application >>>

Agriculture application  
Mobile off-highway application  
The ground cleaning machine and scrubber  
Other industry facilities  
Solar tracking

### 选件 >>>

电位计  
限位开关

### Option >>>

Potentiometer  
Limit switch

### 产品特性 >>>

适合恶劣条件的重型铝壳  
易用接口——与集成动力电子器接口，直接接到控制系统上  
设计为室外使用

### Features >>>

Heavy aluminum shell suitable for harsh conditions  
Handy connector---Connected to the integrated electronic devices, then connect to the control system directly  
Design for outdoor using

## HB-DJ808A

HB-DJ808A设计紧凑，适用于对安装尺寸要求苛刻的重型传动领域。

HB-DJ808A with compact design, is suitable for extremely strict installation condition of heavy load transmission fields.



### 特性 >>>

推力：推力可达7000N，拉力可达6000N  
速度：最快38mm/s  
行程：100mm，200mm，300mm，400mm(可选)  
占空比：25%  
电压：直流12/24/36/48V  
端点止动：机械离合制动器

### Features >>>

Load: push 7000N, pull 6000N  
Max Speed: 38mm/s  
Stroke: 100mm, 200mm, 300mm, 400mm (Optional)  
Duty cycle: 25%  
Input voltage: 12/24/36/48VDC  
Clutch brake

### 应用范围 >>>

农业应用  
移动“非公路”应用  
地面清扫机及洗涤剂  
各种工业设备

### Range of application >>>

Agriculture application  
Mobile off-highway application  
The ground cleaning machine and scrubber  
Other industry facilities

### 选件 >>>

无电位限位开关

### Option >>>

No limit switch

### 产品特性 >>>

适合恶劣条件的重型铝壳  
设计为室外使用

### Features >>>

Heavy aluminum shell suitable for harsh conditions  
Design for outdoor using

## HB-DJ806

HB-DJ806是一款结构紧凑、微型免维护电动推杆，是替代相应规格气缸和液压缸的理想方案。

HB-DJ806 is a compact, smaller and maintenance-free actuator, it's a perfect plan to replace cylinder and hydraulic of corresponding specifications.



### 特性 >>>

推力：推力可达1200N，拉力可达1000N  
速度：最快60mm/s  
行程：100mm，200mm，300mm(可选)  
占空比：25%  
电压：直流12/24/36/48V

### Features>>>

Load: push 1200N, pull 1000N  
Max Speed: 60mm/s  
Stroke: 100mm, 200mm, 300mm (Optional)  
Duty cycle: 25%  
Input voltage: 12/24/36/48VDC

### 应用范围 >>>

农业应用  
清扫车及洗涤器  
各种工业设备

### Range of application >>>

Agriculture application  
Sweeping car and washer  
Other industry facilities

### 选件 >>>

电位计反馈

### Conditions >>>

Potentiometer feedback

### 产品特性 >>>

适合恶劣条件的铝壳  
易用接口——与集成动力电子器接口，直接接到控制系统上  
相对或绝对反馈的霍尔传感器或电位计，与行程无关  
设计为室外使用

### Features >>>

Aluminum cover suitable for extreme conditions  
Handy connector---Connected to the integrated electronic devices, then connect to the control system directly  
potentiometer, independent and have no effect on Stroke.  
For outdoor using.

## HB-DJ809

HB-DJ809是一款大推力微型电动推杆。

HB-DJ809 is a heavy duty micro electric actuator.



### 特性 >>>

推力：推力可达2500N，拉力可达1600N  
速度：最快58mm/s  
行程：100mm/150mm/300mm任选或定制  
占空比：25%  
电压：12/24/36/48VDC

### Features >>>

Load: Max push 2500N, max pull 1600N  
Max speed: Max 58mm/s  
Stroke: 100mm/150mm/300mm optional/ customized  
Duty cycle: 25%  
Input voltage: 12/24/36/48VDC

### 应用范围 >>>

农业机械及各种车辆应用  
清扫车及洗涤设备  
电控测试  
各种工业自动化设备

### Range of application >>>

Agricultural machinery and all kinds of vehicles  
Sweeper and washing equipment  
Electrical testing  
All kinds of industrial automation equipment

### 选件 >>>

电位计和霍尔反馈

### Option >>>

Potentiometer & hall feedback

### 产品特性 >>>

适合恶劣条件下的铝壳  
易用接口——与集成动力电子器匹配，直接连接到控制器系统上  
相对和绝对反馈的霍尔传感器或电位计  
设计为户外使用，可选配静音结构

### Features >>>

Aluminum shall housing for harsh conditions  
Handy connector--Connected to the integrated electronic device, then connect to the control system directly.  
Relative and absolute feedback of hall sensor or potentiometer  
Design for out door use, no noise structure optional.



## HB-DJ810

HB-DJ810是设计简单、实用，低噪音的电动推杆广泛应用于医疗、家具等室内场所。

HB-DJ810 is a simple, useful and low noise electric actuator widely use for medical equipment, furniture and in door applications.



### 特性 >>>

推力：推力可达4000N，拉力可达3500N  
速度：最快32mm/s  
行程：100mm/200mm/300mm任选或定制  
占空比：10%  
电压：12/24VDC  
端点止动：内置限位开关

### Features >>>

Load: Max push/pull 3500N  
Max speed: max 32mm/s  
Stroke: 100mm/200mm/300mm optional/ customized  
Duty cycle: 10%  
Input voltage: 12/24VDC  
Operation: Build in limit switch

### 应用范围 >>>

医疗床、医疗器械设备、内置式开窗器  
智能家具、功能沙发  
户内工业设备

### Range of application >>>

Medical bed & instrument, window opener  
Intelligent Furniture, Electric sofa  
Indoor industry equipment

### 选件 >>>

霍尔效应传感器  
Option >>>  
Hall effect sensor

### 产品特性 >>>

产品静音设计，安装距短安装空间小，为户内使用

### Features >>>

Design for no noise, small installation space, indoor use.

## HB-DJ807

HB-DJ807设计简单，实用，低噪音，广泛应用于家具、医疗等室内场所。

HB-DJ807 is a handy, practical and low noise actuator, applied to furniture, medical and indoor places widely.



### 特性 >>>

推力：推力可达6000N，拉力可达5000N  
速度：最快25mm/s  
行程：100mm, 200mm, 300mm (可选)  
占空比：10%  
电压：直流24V  
端点止动：内置限位开关

### Features >>>

Load: push 6000N, pull 5000N  
Max speed: 25mm/s  
Stroke: 100mm, 200mm, 300mm (Optional)  
Duty cycle: 10%  
Input voltage: 24VDC  
Operation: Build in limit switch

### 应用范围 >>>

生产线应用  
医疗器械应用

### Range of application >>>

Production line application  
Medical application

### 选件 >>>

霍尔效应传感器  
Option >>>  
Hall effect sensor

### 产品特性 >>>

适合户内条件的简洁高效  
易用接口——与集成动力电子器接口，直接接到控制系统上

### Features >>>

Efficient indoor use  
Handy connector——Connected to the integrated electronic devices, then connect to the control system directly

## HB-DJ802

HB-DJ802是一款滑块式电动推杆。

HB-DJ802 is a slide block electric actuator.



### 特性 >>>

推力：推力可达1600N，拉力可达800N

速度：最快16/32mm/s

行程：330mm/175mm/90mm任选或定制

占空比：10%

电压：24VDC

### Features >>>

Load: Max Push 1600N, max pull 800N

Max speed: Max 16/32mm/s

Stroke: 330mm/175mm/90mm (optional/ customized)

Duty cycle: 10%

Input voltage: 24VDC

### 应用范围 >>>

智能家具

功能沙发，电视升降器

户内工业设备

### Range of application >>>

Intelligent Furniture

Electric sofa, TV lifter

In door industry equipment

### 产品特性 >>>

产品静音设计，内置限位开关，为户内使用

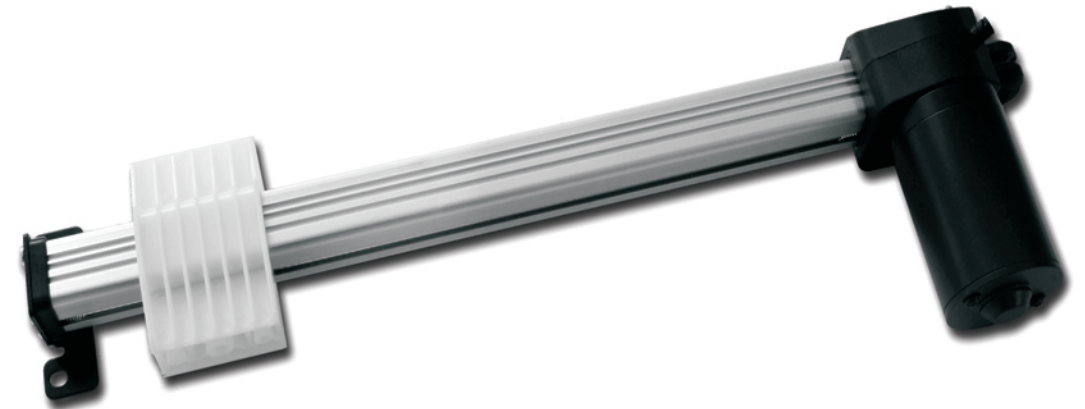
### Features >>>

Design for no noise, build in limit switch, for in door use.

## HB-DJ803

HB-DJ803是一款滑块式电动推杆。

HB-DJ803 is a slide block electric actuator.



### 特性 >>>

推力：推力可达1600N，拉力可达800N

速度：最快16/32mm/s

行程：330mm/175mm/90mm任选或定制

占空比：10%

电压：24VDC

### Features >>>

Load: Max Push 1600N, max pull 800N

Max speed: Max 16/32mm/s

Stroke: 330mm/175mm/90mm (optional/ customized)

Duty cycle: 10%

Input voltage: 24VDC

### 应用范围 >>>

智能家具

功能沙发

户内工业设备

### Range of application >>>

Intelligent Furniture

Electric sofa

In door industry equipment

### 产品特性 >>>

产品静音设计，内置限位开关，结构紧凑，简洁大方，为户内使用

### Features >>>

Design for no noise, build in limit switch, compact structure, for in door use.

## 手柄控制开关 Handle control switch



HB-SK501



HB-SK502



HB-SK503



HB-SK504



HB-SK505



HB-SK506



HB-SK507



HB-SK508



HB-SK509



HB-SK510

## 全新的自动化应用领域 New automation applications



建筑及机械  
Buildings and machinery



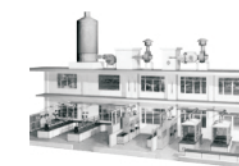
农业机械  
Agricultural machinery



户外动力设备  
Outdoor power equipment



工业自动化  
Industrial automation



通风及畜牧业解决方案  
Ventilation and animal husbandry solution



太阳能及风能  
Solar and Wind energy



医疗用床设备  
Bed equipment for medical use



残疾人车辆自动化  
The disabled vehicles automation



餐饮自动化  
Catering automation



多功能沙发  
Multifunctional sofa

更多的方案请登录 >>>  
More solutions, please login>>> [www.wxhongba.com](http://www.wxhongba.com)



## 100%功能测试 / 100% function tests

在每一种应用方面，推杆只是其中之一，然而每一种科学的测试对您以及您的客户有着不言而喻的重要性，宏霸出厂的所有产品都经过了100%的功能试验。根据推杆类型，我们进行了不同的测试。我们保证，基于宏霸机电系统的电动推杆解决方案，将是一个可靠的，运行数年的解决方案。

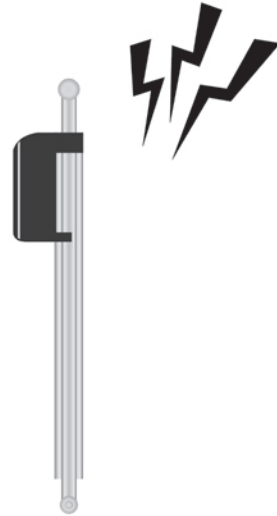
In every application, actuator is just one of them. However each scientific test is very import for you and your client. All the finished products of HongBa have under 100% function test. According to the type, we performed different tests. We guarantee the HongBa solution will be a reliable solution and for several years running.

### 电气测试：

所有电子配件接受电源，开关，信号电缆，控制信号等测试。根据工业标准测试其对无线电噪声、放电和脉冲群的抗电气干扰性。

#### Electrical testing:

All electrical parts are tested i.e. power supply, power and signal cables, control signals etc. Electrical immunity is tested according to industrial standards i.e. for radio noise, electrical discharge and burst.



工业排放通过标准：EN/IEC61000-6-4

机器的电气设备：EN/IEC60204

铁路应用—车辆装置：EN 50121-3-2

游艇指令：94/25/EC

土方机械：EN/ISO 13766

工业抗干扰性通用标准：EN/IEC61000-6-2

汽车指令：2004/104/EC

农林机械：EN/ISO 14982

建筑机械：EN/ISO 13309

\*这些试验不适用于第三方产品！

Generic standard emission industry EN/IEC 61000-6-4

Electrical equipment of machinery EN/IEC 60204

Railway applications - Rolling stock apparatus EN 50121-3-2

Recreational crafts directive 94/25/EC

Earth moving machinery EN/ISO 13766

Generic standard immunity industry EN/IEC 61000-6-2

Automotive Directive 2004/104/EC

Agricultural and forestry machines EN/ISO 14982

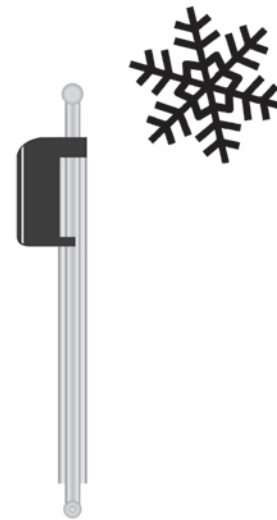
Construction machinery EN/ISO 13309

### 气候测试：

气候测试是测试推杆在极端天气下以及在温度骤变的环境中的运行情况。某些测试中，推杆必须在100° C与-30° C温度之间反复运行，仍能保持完好性能。

#### Climate test:

In the climatic test, the actuators are tested to operate in extreme temperatures as well as to endure rapid changes in temperature. In some tests, the actuator has to withstand going from a +100° C environment to -30° C repeatedly and still maintain full functionality.



冷试法：EN600068-2-1 (Ab)

干热：EN600068-2-2 (Bb)

变化：EN60068-2-14

湿热：EN60068-2-30

盐雾测试：EN60068-2-52

保护程度：EN60529-IP66

化学物：BS7691/96小时

Cold test: EN600068-2-1 (Ab)

Dry heat: EN60068-2-2 (Bb)

Change of temperature: EN60068-2-14

Damp heat: EN60068-2-30

Salt spray: EN60068-2-52

Degrees of protection: EN60529-IP66

Chemicals: BS7691/96 hours

### 机械测试：

振动：推杆须经受住三个方向的继续振动。

冲击：冲击试验使推杆接受高达100G的来自六个方向的三次冲击。

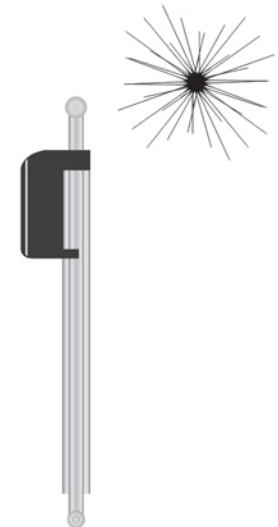
撞击：推杆承受高达40G的来自六个方向的数百次撞击。

#### Mechanical tests:

Vibration: The actuator must withstand continuous vibration in three directions.

Shock: The shock test puts the actuator through 3 shocks of up to 100 G in each of 6 directions.

Bump: The actuator receives bumps of up to 40 G in each of six directions several hundred times.



振动：EN60068-2-36 (Fdb)

撞击：EN60068-2-36 (Fdb)

冲击：EN60068-2-27 (Ea)

Vibration: EN60068-2-36 (Fdb)

The impact: EN60068-2-36 (Fdb)

Impact: EN60068-2-27 (Ea)